

Excellent Connectivity
& Collaboration

AVCIT
Stock Code :001229

DS.X

Intuitive Video Wall Processing over IP & Dynamic KVM over IP

All-in-one Command & Control Centre Solutions by AVCIT



AI Gesture Video Wall Control

AI gesture video wall control system upgrades the human-machine interaction, integrating the images adjution, 3D space exchange, skeleton as well as the Face ID, gesture and other technologies, which realizes the large screen control without the need for any wearing device.



Make it simple

Based on skeleton of the hand, no need to wear any device;



No Touch Control

Interact and control the screen by gesture without touching it, implementing the video switching;



Waving control

Support Face ID recognition, permission handover, and control the screen by waving hands to do the layout switching and recall;



Gesture control

Use finger instead of the mouse to do the KVM operation, such as drag-and-drop the background image, and click the screen.

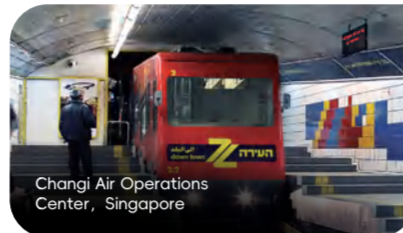
Please wave to me !



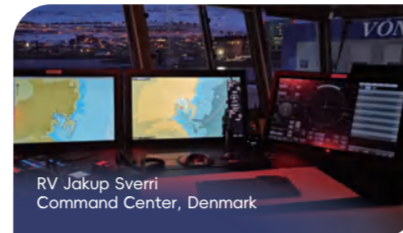
References

Government Emergency
Operations Centre in Jakarta

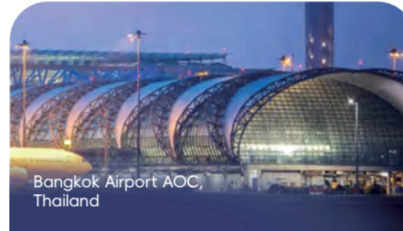
Changi Air Operations Center,
Singapore



Changi Air Operations
Center, Singapore



RV Jakup Sverri
Command Center, Denmark



Bangkok Airport AOC,
Thailand



Jurong Port Integrated
Command Centre, Singapore



Network Operation
Center(NOC) for
National Bank of Kuwait

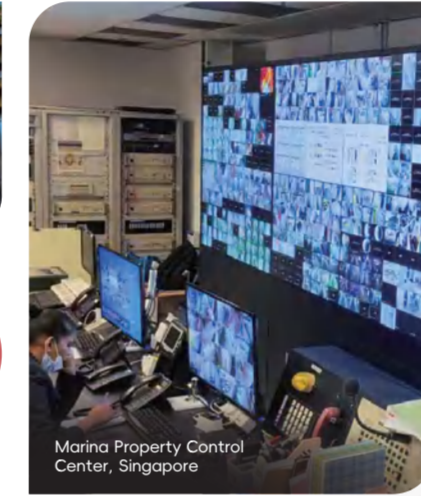
Indonesia Jakarta 3 Data
Center



Matinsa Traffic Management
Command Center, Spain



Cyber Security Centre,
University of Technology,Malaysia



Marina Property Control
Center, Singapore

IOC for Ipoh
City Council Malaysia

For more details
please contact the regional manager

AI Copilot 5K KVM

5K AI copilot OSD : 4K Main Screen+1K UI, experience the best KVM vision and control.

This is the most thorough OSD by now : which insist of the floating OSD, Face ID, auto lock, auto unlock, get & push, share, video meeting, signal management, layout preset and recall, AI OCR, AI recognition, auto face tracking etc.



Redefine KVM OSD

More comfortable, more intelligent, more efficient;



Exceptional vision

5K Resolution Support;



Customized menu

OSD can be customized as per the user requirements.



High definition image

4K main screen(4K@60)+1K UI, multi-view layouts setting;



4K@60 4:4:4

The system can transmit and display 4K UHD image over ultra-low latency, which is imperceptible to the naked eye. It can provide high-definition, full-dynamic, full-real-time image and audio for relevant units and personnel in various industries under general network environment, realizing interconnection and intercommunication.



Core Patents and Independent R&D

Breaking through the bandwidth bottleneck with ultra-low bitrate transmission,
displaying 4K pixel-to-pixel UHD image quality;

4:4:4

Superior image quality than high
bitrate low compression ratios
technology (like VC2, JPEG, etc.).

4~20M

The transmission bitrate for each
signal is only 4~20M, with low
pressure on the network and low
energy consumption.

<16.7ms

Ultra-low latency of 16.7ms,
imperceptible to the the
switching, no black screen, no
flashing screen.

Remote O&M Command Platform

Large-scale on-site security / Mobile command vehicle / Emergency rescue command station

AVCIT Operation & Maintenance system is remote command platform based on the B/S architecture, it solves the information asymmetry between the command center and the remote mobile deployment in the practice of remote command, efficiently completes command decision-making and action deployment, and can control all equipment in the system



Support Linux OS



Remote video wall control



System health O&M,
3rd-party device management



Cross-regional remote command

| Web remote command dispatch | Web audio mixing dispatch | Web KVM |

Remote Command and O&M Platform

| 3rd-party equipment management | Scenario-based health O&M | Asset management | E-map | Alarm/Detection |

Highlights & Benefits by KVM over IP Solution

- No video wall matrix or LED/LCD wall controller or KVM server required;
- Decentralized architecture, no central processing server is required, no single point of failure;
- Industry-leading ASE technologies, with ultra-low bandwidth, get pixel-perfect image quality;
- Follow me technology, no workspace limitation for the operator;
- Natively compatible with 3rd party systems and advanced technology, i.e. CCTV, VMS, AI, 5G.

Guangdong AVCIT Technology Holding Co., Ltd

Tel: +8620 8930 1789

Email: inquiry@avcit.com

Website: www.avcit.com

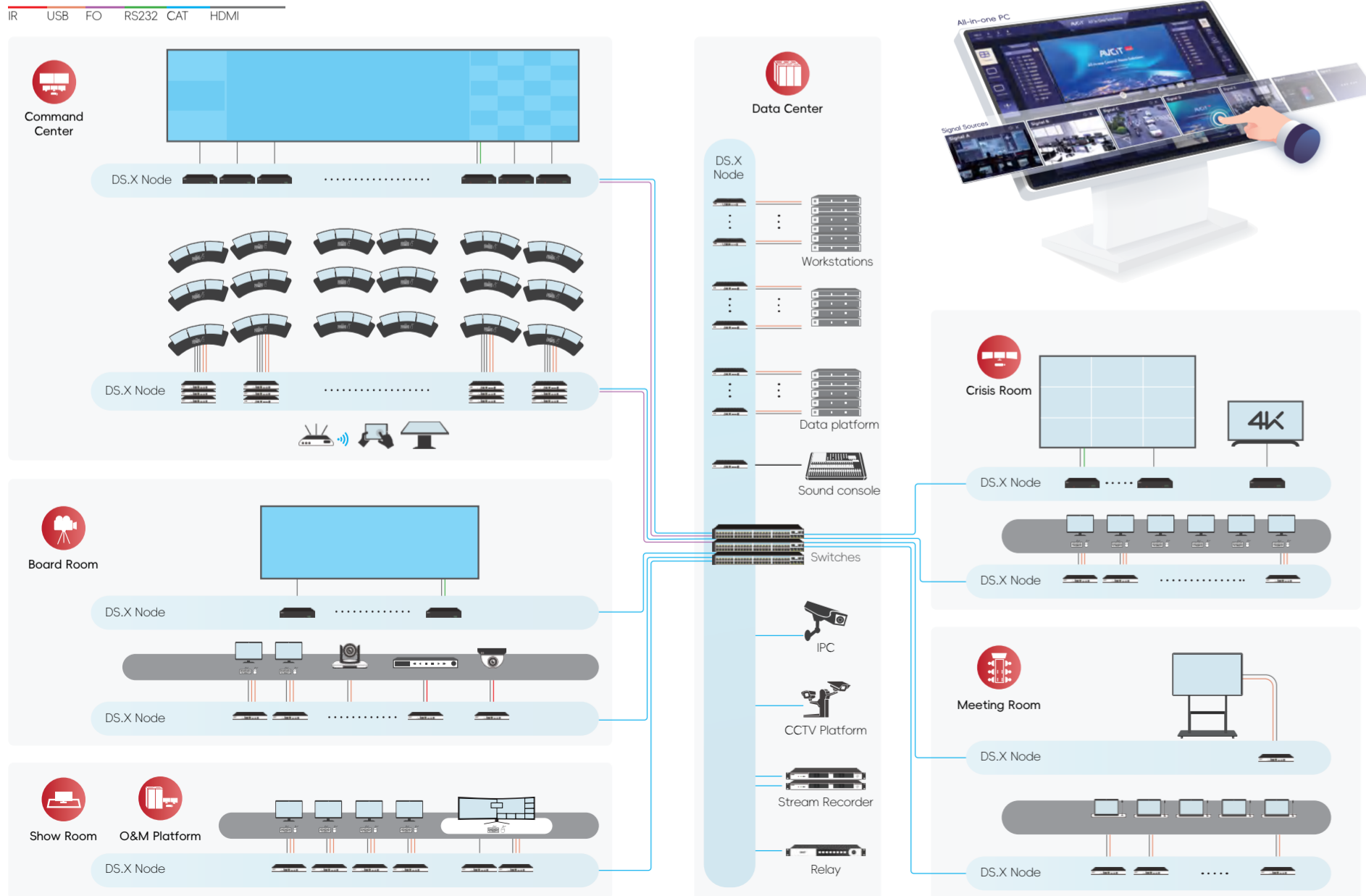
DS.X



Application Industries



SYSTEM SCHEMATIC



Command Center

Intuitive & Visualized Video Wall Control

- The visualized user interface that allows to preview all the source content and video wall content, ensuring the correct source can be always switched to the video wall intuitively.

Support 8K, 16K, 32K Signals

- Support multiple-head GPU signals with 8K, 16K, 32K resolution; 8K, 16K, 32K signals could be previewed on control tablet, and sent to video wall by touch;
- Benefit from the low bit-rate technologies, video walls content among multiple sites could be duplicated.

AI Gesture Video Wall Control

- Only registered operator could be automatically recognized by AI and allowed to control video wall by gesture;
- Operator could select source by finger-pointing, and send to certain video wall partition;
- Operator could use his finger to zoom a signal in/out.

Signals Collect/Search

- Efficient fuzzy searching, quickly matching the required content from a large number of signals;
- Collect and manage massive signals in favorite folder.

Presets Save & Recall

- Multiple scenarios/presets could be saved and recalled seamlessly;
- The name of preset button could be modified by user anytime if necessary;
- The saved preset could be replaced by a new layout;
- List of Presets could be folded and categorized;
- Unlimited preset could be created.

Excellent Collaboration

- Workspace operators can access computers/sources seamlessly, and share or send them to other operators or video walls;
- Operators could push desktop content to another operator.

Visualized & Intuitive OSD

- Intuitive OSD interface, free to relocate on your desktop by drag/drop;
- Visualized OSD interface, enabling preview the source content in real time;
- Build-in visualized VW control features in OSD;
- Support touch monitor.

Storing Computers in Data Center

- Source devices can be separated from workspace and stored in the data center where they are safe, air conditioned, so that heat and noise emissions in the office can be eliminated.



Crisis Room

Permissions Configuration

- User accounts are created by administrator on OSD, who has full permissions to control all the computers/sources;
- Each user is configured with a type of access permissions to each computer;
- User permissions can be duplicated for creating user groups.

Temporary Permissions

- Operator can share his permissions to others by creating a temporary password when he needs to leave his workspace;
- Temporary account will logout automatically if the original account was logged in.

Follow Me

- User's personal configuration will follow the workspace wherever he logs in, so that the chief can fastly access the computers/sources when he logs in by his account in the crisis room.

Multi-location Video Collaboration

- The computers/sources can be shared among multiple locations (command centers, meeting rooms, board rooms);
- Therefore, the chief can watch any dynamic information for fast decision-making.

Video Encryption

- Support video stream encrypted transmission, safeguard core assets; Video authentication, only designated operators can watch the video content.



Meeting Room

Interactive Paperless System

- Simultaneous annotation and content-sharing functions are available on any attendee's touch monitor;
- Attendees could remote any authorized server, and share with others by touch control;
- No server required.

One Touch

- Presets recalling, scenarios switching, environment controlling and task dispatching all these operations are intuitively done by one touch. Hence, the chairman can control the meeting efficiently.

Smart & Soft KVM Control

- Support soft KVM control on source PC by multi-point touch or mouse;
- Intuitive signal cropping, a smaller segment of signal can be sent to the video wall.

Video Wall Annotation

- Operators can annotate and highlight the content of video wall on Window OS control tablet by touch or pen.



Operation & Maintenance Room (O&M Platform)

Operation & Maintenance Platform

- User-friendly and intuitive interface to monitor system's health and manage all the devices;
- B/S based structure allows management of the system locally or remotely, making user easier to monitor and maintain.

Monitoring System Health

- System traffic flow & bandwidth;
- User online/offline quantity.

Manage All the Encoder/Decoder

- Encoder/decoder online/offline;
- Node's CPU & RAM utilization.



Data Center

System Redundancy

- There are both Ethernet and fiber port on each node, so that two independent and redundant system (copper + fiber) can be configured and available for 24/7 continuous operation.

Dynamic Feedback

- Status feedback of room devices and environment controls will be displayed on control tablet dynamically, such as power ON/OFF, temperature, humidity.

User Logs (KVM)

- All the operation by keyboard & mouse will be automatically recorded and stored in your dedicated server, including login, logout, get & push operations.



Board Room

Video Call

- Chairman can make video call with the operator of control room or other room via KVM OSD for better collaboration;
- High image quality with great user experience.

Video Wall Duplicate Displaying

- What displaying on one room's video wall can be simultaneously displayed on board room and other room's video wall.

Offline Layout

- Operator could preview the layout on his control tablet before sending it to video wall.



Showroom

Extraordinary 4:4:4 image quality

- Realize 4:4:4 chroma to get pixel-perfect image quality by H.265 coding technology over low bandwidth (4-20 Mbps per streaming);
- Require 1 Gigabit Switch only, more flexible to build network.

Interactive Experience

- User-friendly and interactive interface;
- Free resize, re-position and overlap pictures by drag/drop control.

Video Auto Scheduling

- Flexible scheduling of signal sources and automatic switching on the video wall, with user-definable scheduling times.